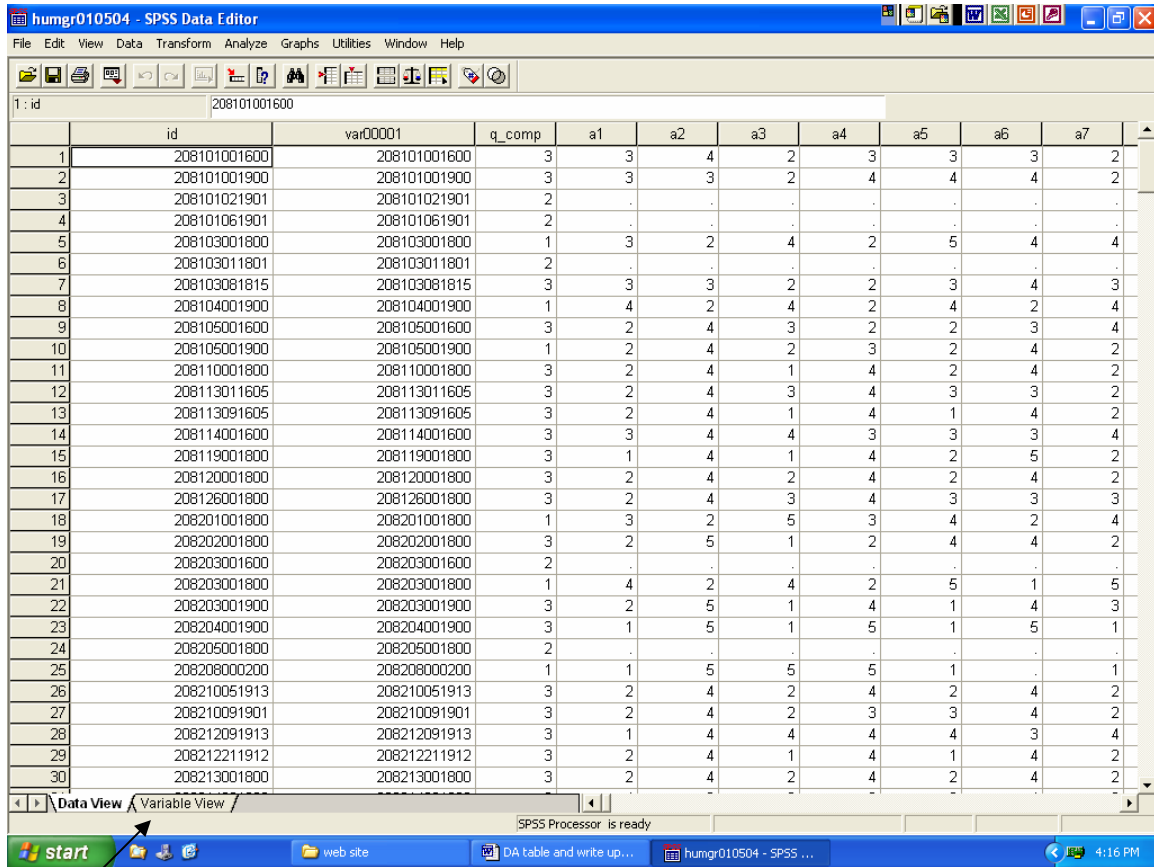
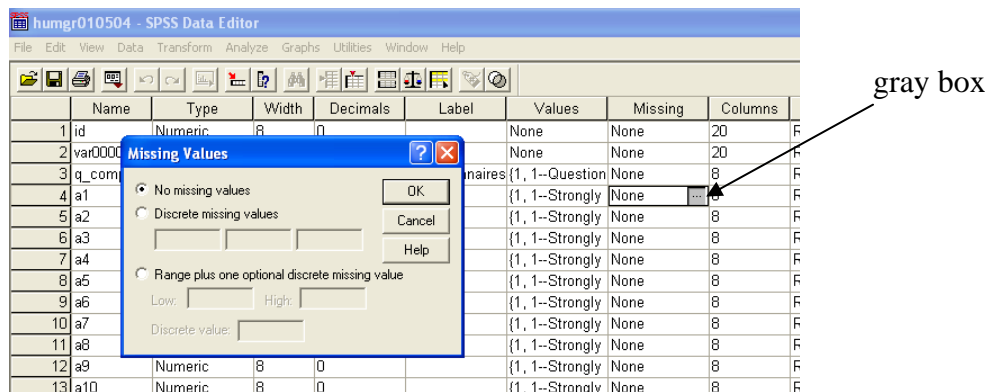


# Missing Data

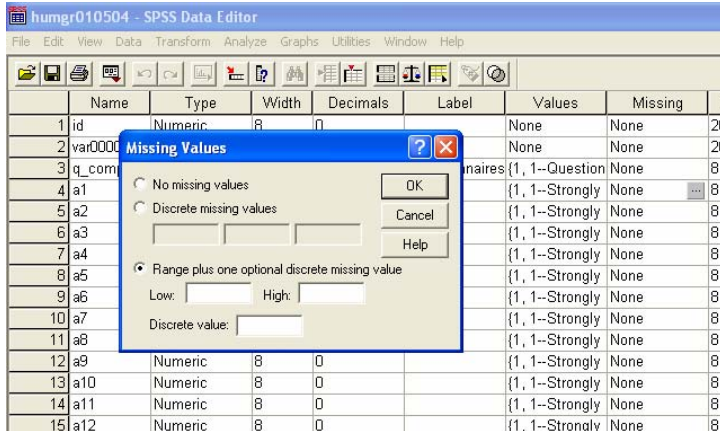
1. Open SPSS Humor data set
2. click variable view tab on lower left of screen



3. Once in variable view go to the missing column
4. right click on the cell under the missing column for the variable you would like to designate missing values for
5. a gray box will appear, click on the box and a window will pop up



- click on the third option (Range plus one optional discrete missing value)



- enter the range of values that SPSS should consider to be missing, for example if you have a 0-10 scale you should have a range of 11-99 as missing so that all other values entered in SPSS will be read as missing

