

# Non-Blocking, Localized Routing Algorithm for Balanced Energy Consumption in Mobile Ad Hoc Networks

Kyungtae Woo, Chansu Yu,  
and Dongman Lee  
School of Engineering  
Information and  
Communications University  
58-4 Hwaam-Dong,  
Yusung-Ku  
Taejon 305-372, Korea  
{hall00, cyu, dlee}@icu.ac.kr

Hee Yong Youn  
School of Electrical and  
Computer Engineering  
Sungkyunkwan University  
300 Chunchun-Dong,  
Jangang-Ku  
Suwon 440-746, Korea  
youn@ece.skku.ac.kr

Ben Lee  
Department of Electrical  
and Computer Engineering  
Oregon State University  
ECE Bldg. 302  
Corvallis, OR 97331  
benl@ece.orst.edu

## Abstract

*As mobile computing requires more computation as well as communication activities, energy efficiency becomes the most critical issue for battery-operated mobile devices. Specifically, in ad hoc networks where each node is responsible for forwarding neighbor nodes' data packets, care has to be taken not only to reduce the overall energy consumption of all relevant nodes but also to balance individual battery levels. Unbalanced energy usage will result in earlier node failure in overloaded nodes, and in turn may lead to network partitioning and reduced network lifetime. This paper presents a new routing algorithm, called Local Energy-Aware Routing (LEAR), which achieves a trade-off between balanced energy consumption and shortest routing delay, and at the same time avoids the blocking and route cache problems. Our performance study based on GloMoSim simulator shows that compared to DSR the proposed LEAR improves the energy balance 10-35% depending on node mobility.*

**Keywords:** *Mobile ad hoc networks, energy consumption, source routing, wireless communication.*

## 1 Introduction

Mobile devices coupled with wireless network interfaces are likely to become a pervasive part of future computing infrastructures with technical advancements in *wireless communication, mobility* and *portability* [1]. Among them, portability may be the most critical issue in these battery-operated devices since battery imposes power, weight and size constraints. In order to provide improved

portability, it is imperative to use *low-power components* and *energy-efficient operations*. As the trend in mobile computing is towards more communication-dependent activities and energy consumption due to the wireless communication can represent more than half of total system power [2], the key to energy efficiency is at the energy-aware network protocols such as links, MAC, routing, and transport protocols.

This paper addresses the issue of energy-conserving routing protocols in *ad hoc networks* of mobile hosts. Ad hoc networks are multi-hop, wireless networks where all mobile hosts or nodes cooperatively maintain network connectivity without communication infrastructures for routing. Many different routing protocols have been proposed in the literature [3-9] and submitted to the *Internet Engineering Task Force (IETF) Mobile Ad Hoc Network (MANET) Group*. A major issue in these algorithms is to find a shortest path consisting of minimum number of intermediate forwarding nodes between a source and a destination. However, it is possible that some particular mobile nodes are unfairly burdened to support many packet-relaying functions. This *hot spot* node may consume more battery energy and stops running earlier than other nodes disrupting the overall ad hoc network. This is particularly true for some optimized routing protocols that prefer specific mobile nodes in the selection of routing paths.

Recently, there has been active research in this regard to improve the energy efficiency of the wireless communication subsystem. *Cano and Manzoni* evaluated several ad hoc routing algorithms in terms of energy consumption [10]. *Singh et al.* proposed power-aware

routing algorithms that try to find a low-energy route instead of the shortest routing path [11]. Two other routing algorithms in this direction can be found in [12,13], where the latter achieves the goal by controlling the transmit power of the communication device as suggested in [14]. However, these studies have three major shortcomings. First, they assume a static network topology where mobile nodes do not move, and thus ad hoc routing algorithms to support mobility are not considered. This assumption simplifies their studies but the validity of their results is limited. Second, their algorithms are *blocking* in the sense that a node must wait until all possible paths have been evaluated according to the given power-related metric to select the best routing path. This is necessary since the algorithms require global information of all relevant nodes along every possible path. For this reason, we call the algorithms *Global Energy-Aware Routing (GEAR)*. Third, their simulation studies do not consider the *route cache*, which is an important optimization technique used in most ad hoc routing protocols [3].

In this paper, we propose a new ad hoc routing protocol, called *Local Energy-Aware Routing (LEAR)*, which achieves a balanced energy consumption among all participating mobile nodes. When a routing path is searched for, each mobile node relies on local information of *remaining battery level* to decide whether to participate in the selection process of a routing path or not. An energy-hungry node can conserve its battery power by not forwarding data packets on behalf of others. Decision-making process in LEAR is distributed to all relevant nodes, and the destination node does not need wait or *block* itself. The proposed scheme efficiently utilizes the route cache and avoids the blocking problem since it does not require global information. To the best of our knowledge, this is the first work to explore the balanced energy consumption in a realistic environment where routing algorithms, mobility, and radio propagation models are all considered. The performance of LEAR is evaluated based on *GloMoSim 2.0* simulator [15] and simulation results show that compared to *Dynamic Source Routing (DSR)* [3] the proposed LEAR algorithm improves the energy balance as much as 35% when node mobility is high and 10% when it is low.

This paper is organized as follows. Section 2 overviews several ad hoc routing algorithms including DSR. In Section 3, we propose an energy-aware routing algorithm LEAR. Performance evaluation of the proposed scheme is presented in Section 4. Finally, concluding remarks are found in Section 5.

## 2 Ad Hoc Routing Algorithms

Routing protocols for mobile ad hoc networks generally fall into one of two categories: *proactive* or *reactive* [16]. Proactive routing protocols are derived from well-known distributed adaptive routing schemes for fixed networks, such as *distance-vector* or *link state algorithms*. These methods attempt to maintain routes to all destinations at all times, regardless of whether they are needed. They react to changes in the network topology by broadcasting updates throughout the network to maintain a consistent network view. Information updates can be topology-driven, periodic, or both. On the other hand, reactive, or so-called *on-demand*, routing algorithms find a route only when desired by a source node. Under highly dynamic link conditions, reactive protocols are expected to generate fewer overhead messages and provide a more reliable routing than proactive routing protocols. See [16,17] for a general overview of these protocols as well as extensive performance comparisons, and [18] for scenario-based performance analysis.

*Dynamic Source Routing (DSR)* protocol [3] is an on-demand routing algorithm based on the concept of source routing. We adopt it as our baseline routing algorithm throughout this paper because of its simplicity and efficiency. Two main components of DSR are *source route* and *route cache*, and two main steps of DSR are *route discovery procedure* and *route maintenance procedure*. When a mobile node has a packet to send to a destination, it initiates the route discovery procedure by broadcasting a *route request message (ROUTE\_REQ)*. Intermediate nodes piggyback their identities on the source route included in *ROUTE\_REQ* message and broadcast again. Each node, whether it is the sender, the destination, or an intermediate node, receives multiple messages along different paths but chooses the best one according to the path length. Since the first arriving message usually contains the shortest source route, it is reasonable to choose this message and ignore all others. In that sense, the DSR protocol is said to be *non-blocking* because every participating mobile node does not have to wait indefinitely for more messages to arrive after receiving the first one. A destination node simply reacts to a *ROUTE\_REQ* message by immediately sending a *route reply message (ROUTE\_REPLY)* to the source and ignores all later messages having the same source-destination pair.

However, the *route discovery procedure* tends to cause a traffic surge as the query is propagated through the network. *Route cache*, which is another main component of DSR, is used to reduce traffic. Each mobile node maintains its own route cache that contains the source routes destined for other mobile nodes. Entries in the

route cache are continually updated as new routes are learned. Figure 1 shows the optimization technique based on the route cache. In this example, a source node (S) initiates a route discovery procedure by broadcasting *ROUTE\_REQ* message to find a path to a destination node (D). Intermediate nodes (for example, node A) forward the message. However, node B stops flooding since an available route to the destination (D) is found in its route cache. A *ROUTE\_REPLY* message is then generated, which includes the identities of intermediate nodes recorded in the route cache ( $C_1$  and  $C_2$  in this example).

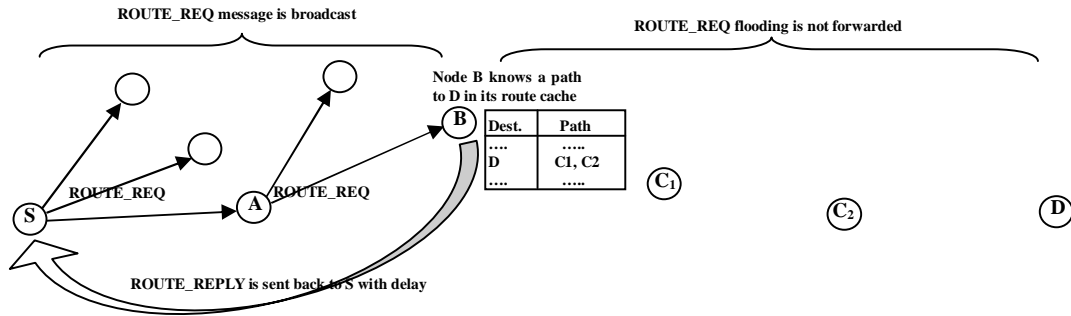


Figure 1. Route Cache in Dynamic Source Routing (DSR)

### 3 Energy-Balancing Routing Algorithms

In this section, we introduce power-aware routing algorithms. A straightforward approach suggested in [11] is to use a power-related metric and try to find an optimal energy-conserving route based on global information. Subsection 3.1 discusses an implementation of the approach based on DSR algorithm. We call the power-aware routing algorithm *Global Energy-Aware Routing (GEAR)*. Even though GEAR can save energy and maximize the system lifetime, we show that it has two major disadvantages that can be avoided with *Local Energy-Aware Routing (LEAR)* protocol as discussed in Subsection 3.2.

#### 3.1 Global Energy-Aware Routing (GEAR)

As explained in the previous section, *ROUTE\_REQ* is propagated towards the destination node in the original DSR algorithm. In GEAR, each node piggybacks its power-related measure (such as the remaining battery power) as well as its identity on the *ROUTE\_REQ* message and forwards (broadcasts) it. The destination node receives multiple request messages but chooses the best route with respect to the given power metric. Table 1 summarizes the GEAR algorithm.

Two major disadvantages of GEAR are difficulty in utilizing the route cache and the blocking property. GEAR protocol inherently cannot utilize the route cache because a node does not have power-related information of the following nodes recorded in its route cache. Without the route cache, we expect traffic surge due to the flood of route request messages as explained in Section 2. Another difficulty is in estimating how long the destination node has to wait before selecting the best route. In order to compare and choose the best one, it has to wait until it receives all request messages along all possible routing

paths. Some time duration can be specified, but if it is too short, some routing paths with a better metric may not be considered. On the other hand, long duration will affect the average response time.

Table 1. GEAR Algorithm

Node	Steps
Source node	<i>Broadcast a ROUTE_REQ;</i> <i>Wait for the first arriving ROUTE_REPLY;</i> <i>Select the source route contained in the message;</i> <i>Ignore all later replies;</i>
Intermediate node	<i>Forward (broadcast) the ROUTE_REQ;</i> <i>Ignore all later requests;</i>
Destination node	<i>Upon receipt the first arriving ROUTE_REQ, wait for all later ROUTE_REQs to arrive with the same source-destination pair;</i> <i>Select the route which minimizes the power metric;</i> <i>Send a ROUTE_REPLY to the source with the source route contained in the message;</i>

#### 3.2 Local Energy-Aware Routing (LEAR)

Localized, power-aware routing algorithm based on DSR is now described. In the original DSR algorithm, each mobile node has no choice but to join in on the route

selection process. The basic idea of the LEAR protocol is to consider each mobile node's willingness to participate in the routing path and to forward data packets on behalf of others. Each node determines whether to accept and forward the *ROUTE\_REQ* message or not depending on its remaining battery power ( $E_r$ ). When it is higher than a threshold value ( $Th_r$ ), the *ROUTE\_REQ* is forwarded; otherwise, the message is dropped. The destination will receive a route request message only when all intermediate nodes along the route have good battery levels. Thus, the first message to arrive is considered to follow an energy-efficient as well as reasonably short path. In contrast, GEAR optimizes energy while the original DSR optimizes delay, but not both. In addition, LEAR is *non-blocking* since the destination node can immediately respond to the first arriving request message.

When any one intermediate node has lower battery level than its threshold value ( $E_r < Th_r$ ), a *ROUTE\_REQ* is simply dropped. If this occurs for every possible path, the source will not receive a single reply message even though there exists a path between the source and the destination. To prevent this, the source will re-send the same route request message, but this time with an increased *sequence number*. When an intermediate node receives the same request message again with a larger sequence number, it adjusts (lowers) its  $Th_r$  by  $d$  to allow forwarding to continue. Table 2 describes the basic operation behavior of the LEAR algorithm.

**Table 2. LEAR Algorithm**

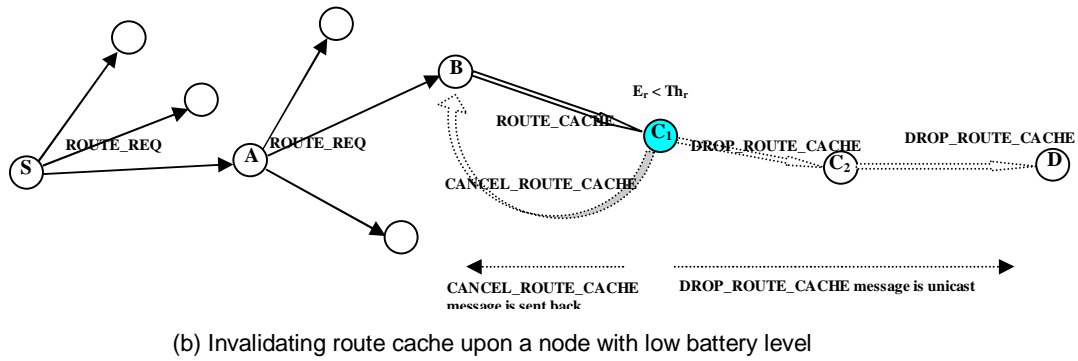
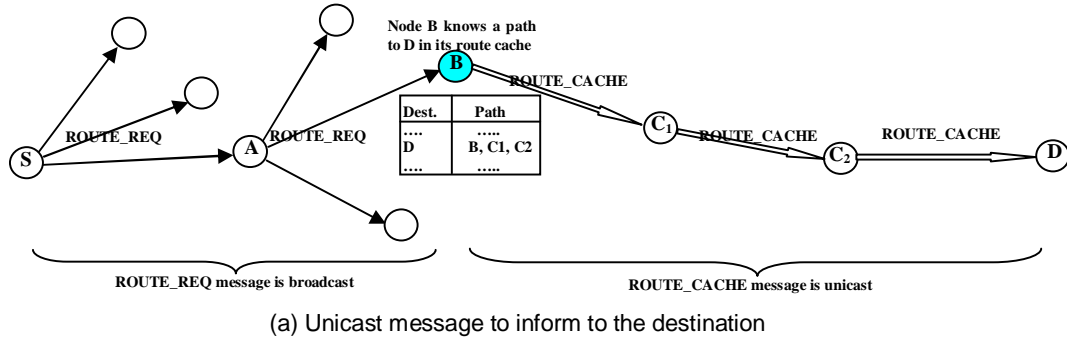
Node	Steps
Source node	<i>Broadcast a ROUTE_REQ;</i> <i>Wait for the first arriving ROUTE_REPLY;</i> <i>Select the source route contained in the message;</i> <i>Ignore all later replies;</i>
Intermediate node	<i>If the message is not the first trial and <math>E_r &lt; Th_r</math>, adjust (lower) <math>Th_r</math> by <math>d</math>;</i> <i>If <math>E_r &gt; Th_r</math>, forward (broadcast) the ROUTE_REQ and ignore all later requests;</i> <i>Otherwise, drop the message;</i>
Destination node	<i>Upon receipt the first arriving ROUTE_REQ, send a ROUTE_REPLY to the source with the source route contained in the message;</i>

LEAR provides the shortest routing path among multiple energy-rich paths. However, in its basic form, it cannot utilize the route cache (as in GEAR) and it may incur repeated route request messages due to dropping of *ROUTE\_REQ* messages. To alleviate these two problems, four additional routing-control messages are

utilized: *DROP\_ROUTE\_REQ*, *ROUTE\_CACHE*, *DROP\_ROUTE\_CACHE* and *CANCEL\_ROUTE\_CACHE*. Repeated request messages are caused by repeated discovery procedures. For example, consider when a source node (S) sends a *ROUTE\_REQ* message to find the path to a destination (D). If intermediate nodes A, B,  $C_1$  and  $C_2$  have lower  $E_r$ 's than the required  $Th_r$ 's, node A will drop the request message. S will resend the *ROUTE\_REQ* message with an increased sequence number. Then, node A adjusts its threshold value and forwards the message, but this time node B will drop it. Destination node D will finally receive a *ROUTE\_REQ* message at the fifth route discovery procedure. The control message, *DROP\_ROUTE\_REQ*, is used to avoid this cascading effect. When a node drops a *ROUTE\_REQ* message, it instead forwards a *DROP\_ROUTE\_REQ* message. The subsequent nodes closer to the destination now know that a request message was dropped and lower their threshold values when they receive the second *ROUTE\_REQ* message. Now, the second route request message can now reach the destination.

Another problem with the LEAR algorithm is that it does not exploit the optimization technique based on route cache. In the original DSR protocol, when an intermediate node receives a *ROUTE\_REQ* and finds a route to the destination in its route cache, it stops broadcasting and replies to the source immediately. In LEAR, an intermediate node cannot reply because it does not have information on the battery levels of the nodes included in the cache entry (the following intermediate nodes from itself to the destination). For example shown in Figure 2(a), a source node (S) broadcasts a *ROUTE\_REQ* message destined for node D. Even though node B knows the path to D from its route cache, it cannot stop forwarding and reply to S because the battery levels of nodes  $C_1$  and  $C_2$  are not known. Therefore, LEAR utilizes a special unicast message (*ROUTE\_CACHE*) to determine the battery levels of the intermediate nodes along the path to the destination recorded in its route cache (see Figure 2(a)). This way, the route cache is properly utilized and at the same time the flooding of route request messages is avoided. Note that the destination node may receive multiple *ROUTE\_REQ* messages and multiple *ROUTE\_CACHE* messages, but chooses the first arriving one to reply to the sender.

Complications arise when a node (node  $C_1$  in Figure 2(b)) has lower battery level than its threshold value ( $E_r < Th_r$ ) along the unicast of a *ROUTE\_CACHE* message. As in the normal *ROUTE\_REQ* message, it informs this situation to the subsequent nodes (nodes  $C_2$  and D) by sending *DROP\_ROUTE\_CACHE* message in order for them to adjust their power levels by  $d$  at the next route



**Figure 2. Exploiting Route Cache in LEAR**

request message. Another special message, *CANCEL\_ROUTE\_CACHE*, is sent back to the node that started sending the *ROUTE\_CACHE* message (node B) so that it can invalidate the entry in its route cache. This is required since there may be a more energy-efficient route from node B, but other paths will never be explored as long as it has an entry to node D in its route cache. Table 3 describes the complete LEAR algorithm.

**Table 3. Complete LEAR Algorithm**

Node	Steps
Source node	<p>Broadcast a <i>ROUTE_REQ</i>;</p> <p>Wait for the first arriving <i>ROUTE_REPLY</i>;</p> <p>Select the source route contained in the message;</p> <p>Ignore all later replies;</p>
Intermediate node	<p>Upon receipt a <i>ROUTE_REQ</i>,</p> <p>If the message is not the first trial and <math>E_r &lt; Th</math>, adjust (lower) <math>Th</math>, by <math>d</math>;</p> <p>If it has the route to the destination in its cache,</p> <p>if <math>E_r &gt; Th</math>, forward (unicast) <i>ROUTE_CACHE</i> and ignore all later requests;</p> <p>otherwise, forward (unicast) <i>DROP_ROUTE_CACHE</i> and ignore all later requests;</p>

	<p>Else,</p> <p>if <math>E_r &gt; Th</math>, forward (broadcast) <i>ROUTE_REQ</i> and ignore all later requests;</p> <p>otherwise, forward (unicast) <i>DROP_ROUTE_REQ</i> and ignore all later requests;</p>
	<p>Upon receipt a <i>ROUTE_CACHE</i>,</p> <p>If the message is not the first trial and <math>E_r &lt; Th</math>, adjust (lower) <math>Th</math>, by <math>d</math>;</p> <p>If <math>E_r &gt; Th</math>, forward (broadcast) <i>ROUTE_CACHE</i> and ignore all later requests;</p> <p>Otherwise, forward (unicast) <i>DROP_ROUTE_REQ</i> and ignore all later requests; and send backward (unicast) <i>CANCEL_ROUTE_CACHE</i>;</p>
Destination node	<p>Upon receipt the first arriving <i>ROUTE_REQ</i> or <i>ROUTE_CACHE</i>, send a <i>ROUTE_REPLY</i> to the source with the source route contained in the message;</p>

## 4 Performance Evaluation

This section provides the simulation results and shows the effectiveness of the proposed LEAR algorithm compared to the original DSR. We used *GloMoSim 2.0*

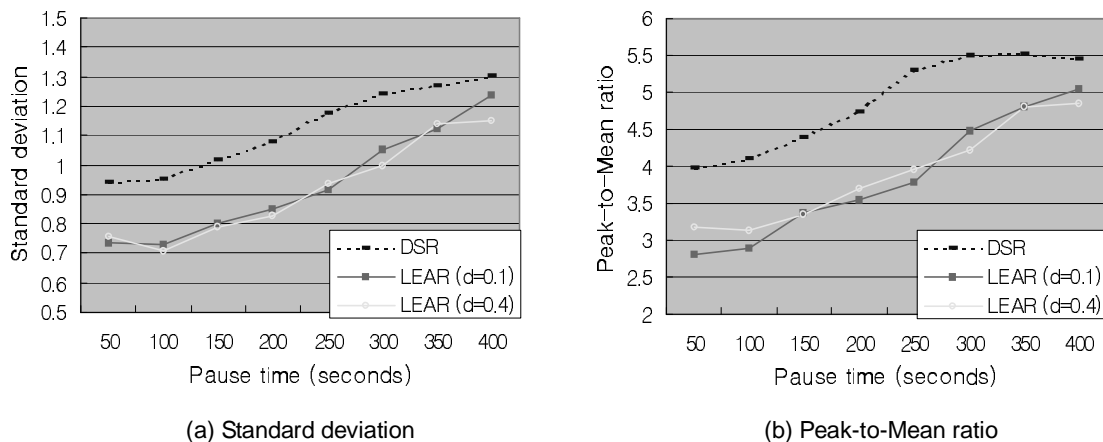


Figure 3. Distribution of Energy Consumptions of 40 Mobile Nodes

simulator [15], which is a scalable simulation environment for wireless and wired networks based on *Parsec* [19]. *GloMoSim* supports a wide range of ad hoc routing protocols as well as realistic physical layers.

Our evaluations are based on the simulation of 40 mobile nodes moving about over a regular rectangular area of 1000 meters by 1000 meters for 500 seconds of simulated time. In order to provide a fair comparison, the same set of seed numbers was used for different routing algorithms. The seed is used to generate random numbers for selecting initial positions of the mobile nodes as well as for specifying mobility pattern. We assume that mobile nodes move randomly according to the “*random waypoint*” model [1]. Each node begins the simulation by staying at the initial position for a predefined pause time. It then selects a random target position in the simulated area and moves to that direction at a randomly chosen speed between minimum and maximum speeds (0~5 meters/second). The node repeats this mobility behavior after reaching the target.

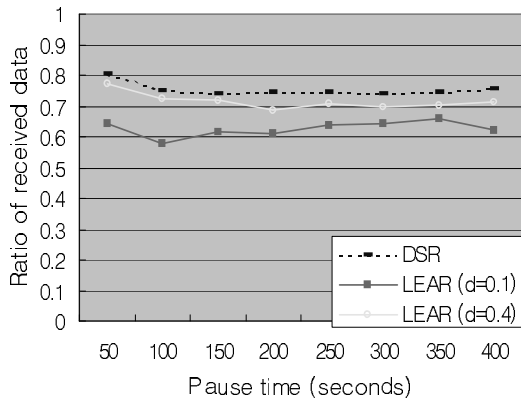
In our simulation, five *constant bit rate (CBR)* sources and their corresponding destinations are randomly selected among 40 mobile nodes. Each CBR source sends five 1024-byte packets every second for a specified duration. Since the data transmission is based on UDP rather than TCP, some data packets can be lost. *GloMoSim* simulates a realistic physical layer that includes a *radio propagation model*, *radio network interfaces*, and the *IEEE 802.11 Medium Access Control (MAC)* protocol using the *Distributed Coordination Function (DCF)*. The *radio network interface card (NIC)* model includes collisions, propagation delay and signal attenuation with a 2Mbps data rate and a radio range of 250 meters.

In this paper, we are specifically interested in energy consumption and its balance across all mobile nodes. For

each node, energy consumption is measured at the radio layer during the simulation. According to the specification of *IEEE 802.11-compliant WaveLAN-II* [20] from Lucent, the power consumption varies from 0.045 Watts (9mA  $\times$  5 Volts) in sleep mode to 1.25~1.50 Watts (230~250mA  $\times$  5 Volts) in receiving and transmitting modes, respectively (see Section 5). The instantaneous power is multiplied by time delay to obtain the energy consumed. For example, data transmission of a 1024-byte packet consumes  $6.14 \times 10^{-3}$  Joules (1.50 Watts  $\times$  1024 $\times$ 8 bits / 2000000 bps). Two energy-related assumptions were made for our simulation study. First, the energy consumption during idling was ignored. Since a node stays idle most of time<sup>1</sup>, a general idea to conserve energy is to put the node in sleep mode while idling and make the node consume negligible energy. Second, *non-promiscuous receive mode* [3] was assumed. Since a node does not know when others send packets to itself, it should be in promiscuous receive mode. However, emerging standards for wireless LANs such as *IEEE 802.11* [21] and *Bluetooth* [22] provides a mechanism for each node to know when to wake up and receive packets and to sleep rest of the time. Thus, time delay due to data receive is similar to that due to data transmission for a relaying node. Without this assumption, energy consumption is dominated by data receive or *overhearing* [10] and the proposed LEAR algorithm may provide a limited benefit.

Detailed simulation results on the distribution of energy consumptions are presented in Figure 3. Each

<sup>1</sup> In this study, a CBR source transmits five 1024-byte data packets per second for 500 seconds of the simulation time, translating 10.24 seconds of transmission delay (1024  $\times$  8 / 2000000 bps  $\times$  500 seconds  $\times$  5 packets/second). Some of the rest 489.76 seconds are used to receive data but most of time the node will do nothing.



(a) Ratio of received data

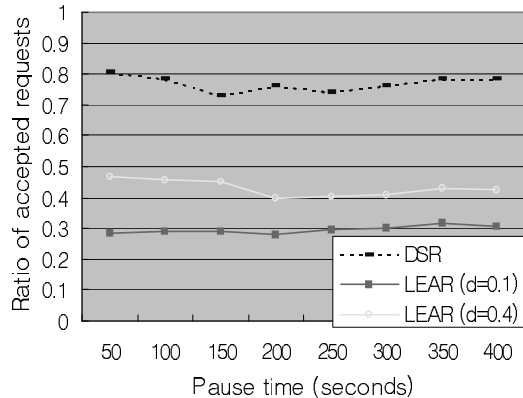
(b) Ratio of accepted *ROUTE\_REQs*

Figure 4. Other Simulation Results

data shown in Figure 3 and the following figures are obtained by taking average of 100 simulation runs. We obtained *standard deviation* and *peak-to-mean ratio* as the performance metrics to measure the distribution. Pause time is varied from 50 to 400 seconds. We exclude the CBR source and destination nodes since they must transfer data packets and consume much larger energy than other nodes regardless of their remaining battery power. Initial threshold value ( $Th_r$ ) of each mobile node is set to 90% of its initial battery energy and the adjustment value ( $d$ ) is either 0.1 or 0.4. As shown in Figure 3, LEAR improves the energy balance as much as 35% when node mobility is high (50 seconds of pause time) and 10% when it is moderate (400 seconds of pause time). The adjustment value does not affect the results. (When the maximum node speed is faster (20 meters/second), LEAR still outperforms DSR, but the benefit is reduced to as much as 20%. We do not include the detailed simulation results due to space limit.)

Figure 4 presents other performance measures with the same simulation environment as in Figure 3. Because the data transmission from the CBR sources is based on UDP, some data packets can be lost and Figure 4(a) shows the ratio of received data. Acceptance ratio of *ROUTE\_REQ* messages is presented in Figure 4(b). A *ROUTE\_REQ* is dropped when an intermediate node has lower battery level than its threshold value ( $E_r < Th_r$ ). With smaller adjustment value ( $d=0.1$ ), a node will drop *ROUTE\_REQ* messages more frequently and the corresponding overhead is increased. It is noted that the ratio is not 100% even with the DSR algorithm. Since each *ROUTE\_REQ* message has a limited *TTL* (*time to live*), a node may drop *ROUTE\_REQ* message when the *TTL* value expires.

## 5 Conclusion and Future Work

An energy-aware routing for ad hoc networks, called Local Energy-Aware Routing (LEAR), was introduced. LEAR achieves balanced energy consumption based only on local information, thus removes the blocking property of other energy-aware routing algorithms proposed elsewhere. Another important advantage of LEAR is its simplicity and it can be easily integrated into existing ad hoc routing algorithms without affecting other layers of communication protocols. Simulation results show that energy usage is better distributed with the proposed LEAR algorithm as much as 35% compared to the DSR algorithm. To the best of our knowledge, this is the first work to explore the balanced energy consumption in a realistic environment where routing algorithms, mobility and radio propagation models are all considered.

This paper does not include the simulation results with GEAR that is not realistic due to the indefinite delay at the decision-making nodes. However, since GEAR can provide ideal energy distribution, it is worthwhile to compare the results with those with LEAR. We leave this as our future work. We also want to refine and optimize the LEAR algorithm by combining with the concept of *APR* (*alternative path routing*). LEAR, in essence, selects an alternative path when a current path is not energy-rich. There have been numerous research works on *APR* [23, 24], where the main goal is to continually provide a path even when an old one is not valid due to node movement. Another future research topic is to explore the possibility of applying the proposed idea in this paper to the broadcast type of network traffic in mobile ad hoc networks [25].

## References

- [1] G. Forman and J. Zahorjan, "The challenges of mobile computing," *IEEE Computer*, Vol. 27, No. 4, pp. 38-47, Apr. 1994.
- [2] R. Kravets and P. Krishnan, "Power Management Techniques for Mobile Communication," *International Conference on Mobile Computing and Networking (MobiCom'98)*, Oct. 1998.
- [3] D. B. Johnson and D. A. Maltz, "Dynamic Source Routing in Ad Hoc Wireless Networks," *Mobile Computing*, edited by T. Imielinski and H. F. Korth, Kluwer Academic Publishers, 1996.
- [4] C. E. Perkins and P. Bhagwat, "Highly Dynamic Destination-Sequenced Distance Vector Routing (DSDV) for Mobile Computers," *ACM SIGCOMM*, 1994.
- [5] R. Castaneda and S. R. Das, "Query Localization Techniques for On-demand Routing Protocols in Ad Hoc Networks," *International Conference on Mobile Computing and Networking (MobiCom'99)*, pp. 186-194, 1999.
- [6] J. Broch, D. A. Maltz and D. B. Johnson, "Supporting Hierarchy and Heterogeneous Interfaces in Multi-Hop Wireless Ad Hoc Networks," *Workshop on Mobile Computing (I-SPAN)*, Jun. 1999.
- [7] C.-K. Toh, "Long-lived Ad-Hoc Routing based on the Concept of Associativity," *Internet-Draft of IETF MANET Working Group*, Mar. 1999.
- [8] C. E. Perkins, E. M. Royer and S. R. Das, "Ad hoc On-Demand Distance Vector (AODV) Routing," *Internet-Draft of IETF MANET Working Group*, Jul. 2000.
- [9] W.-H. Liao, Y.-C. Tseng, and J.-P. Sheu, "GRID: A Fully Location-Aware Routing Protocol for Mobile Ad Hoc Networks", *Telecommunication Systems*, (to appear).
- [10] J.-C. Cano and Pietro Manzoni, "A Performance Comparison of Energy Consumption for Mobile Ad Hoc Network Routing Protocols," *Eighth International Symposium on Modeling, Analysis and Simulation of Computer and Telecommunication Systems (MASCOTS 2000)*, Aug. 2000.
- [11] S. Singh, M. Woo, and C. S. Raghavendra, "Power-Aware Routing in Mobile Ad Hoc Networks," *International Conference on Mobile Computing and Networking (MobiCom'98)*, pp.181-190, Oct. 1998.
- [12] J.-H. Chang and L. Tassiulas, "Energy Conserving Routing in Wireless Ad-hoc Networks," *The Conference on Computer Communications (IEEE Infocom 2000)*, pp.22-31, 2000.
- [13] R. Ramanathan and R. Rosales-Hain, "Topology Control of Multihop Wireless Networks using Transmit Power Adjustment," *The Conference on Computer Communications (IEEE Infocom 2000)*, pp.404-413, 2000.
- [14] I. Stojmenovic and X. Lin, "Power-aware localized routing in wireless networks," *International Parallel and Distributed Processing Symposium (IPDPS)*, pp. 371-376, 2000.
- [15] X. Zeng, R. Bagrodia and M. Gerla, "GloMoSim: A Library for the Parallel Simulation of Large Scale Wireless Networks," *Parallel and Distributed Simulation Conference (PADS)*, 1998.
- [16] J. Broch, D. A. Maltz, D. B. Johnson, Y.-C. Hu and J. Jetcheva, "A Performance Comparison of Multi-Hop Wireless Ad Hoc Network Routing Protocols," *International Conference on Mobile Computing and Networking (MobiCom'98)*, Oct. 1998.
- [17] S. Corson and J. Macker, "Mobile Ad hoc Networking (MANET): Routing Protocol Performance Issues and Evaluation Considerations," *RFC 2501 of IETF Network Working Group*, Jan. 1999.
- [18] P. Johansson, T. Larsson, N. Hedman, B. Mielczarek and M. Degermark, "Scenario-based Performance Analysis of Routing Protocols for Mobile Ad-hoc Networks," *International Conference on Mobile Computing and Networking (MobiCom'99)*, pp. 195-206, 1999.
- [19] R. Bagrodia, et al, "PARSEC: A Parallel Simulation Environment for Complex Systems," *IEEE Computer*, Oct. 1998.
- [20] A. Kamerman and L. Monteban, "WaveLAN-II: A High-Performance Wireless LAN for the Unlicensed Band," *Bell Labs Technical Journal*, pp. 118-133, Summer 1997.
- [21] Hagen Woesner, Jean-Pierre Ebert, Morten Schlager, and Adam Wolisz, "Power-Saving Mechanisms in Emerging Standards for Wireless LANs: The MAC Level Perspective," *IEEE Personal Communications*, Vol. 5, Issue 3, pp. 40-48, Jun. 1998.
- [22] "Complete Bluetooth Tutorial," <http://infotooth.tripod.com/tutorial/complete.htm>.
- [23] A. Nasipuri and S. R. Das, "On-Demand Multipath Routing for Mobile Ad Hoc Networks," *International Conference on Computer Communication and Network (ICCCN'99)*, Oct. 1999.
- [24] M. R. Pearlman, Z. J. Hass, P. Sholander and S. S. Tabrizi, "On the Impact of Alternate Path Routing for Load Balancing in Mobile Ad Hoc networks," *The First Annual Workshop on Mobile Ad Hoc Networking & Computing (MobiHOC 2000)*, Aug. 2000.
- [25] S.-Y. Ni, Y.-C. Tseng, Y.-S. Chen, and J.-P. Sheu, "The Broadcast Storm Problem in a Mobile Ad hoc Network", *Int'l Conf. on Mobile Computing and Networking (MobiCom'99)*, pp. 151-162, 1999.